



# MetroWest Chess Club

Largest Chess Club in New England

Serving the MetroWest Boston chess community since 1983

## November 2005 Newsletter

### Highlights

#### Halloween Swiss Results

Congratulations to the winners:

Open	FM John Curdo
U1850	Neil Cousin
U1600	James Rafferty, Stephen Schnair, and Eli Kariv
U1300	Anirudh Arun

#### MCC Stanley Crowe Memorial Swiss This Month – 5 Rounds, 3 Sections

Stanley Crowe (1935-1995) was a much-beloved MCC member. To read a nice write-up on Stanley from the Nov. 2004 Newsletter, click [here](#).  
Tues. in Nov. at 7:30 pm. Nov. 1, 8, 15, 22, 29.  
3 sections: Open, U1750, U1450

#### Guest Lecturer at Weekly Group Lesson

Our thanks to **George Mirijanian**, who will speak again this month at the club. George will present another game of John Curdo's from the club archives.

#### US Chess League -- Final Match of Season

The Boston Blitz play the last match of the season Wed. night, Nov, 9. After 8 matches, we have a 3-5 score and are in 4th place in the Eastern Division. Come to help or just to watch our top players in action.

#### Chess School Session 6 Coming Up...

With guest lecturer IM Jim Rizzitano on Thursday, November 10 at 7:00 pm.

#### Stranger than Fiction, Part 1.

Analysis of an astonishing ending that might have been, and why it wasn't, by Mark LaRocca, appears in **Kibbitzes**.

#### Skittles Email Group...

Is an email chess forum for club members. To sign up, email to [info AT MetroWestChess.org](mailto:info@MetroWestChess.org) and request to join.

Once signed up, you can send email to [Skittles AT MetroWestChess.org](mailto:Skittles@MetroWestChess.org).

Your email will go to every Skittles member, and replies will go to the whole group.

To reply just to a particular person, put his email address in the "To:" field instead.

#### Skittles Email Group Guidelines

The "Subject" line should reflect your discussion topic.

Skittles email is not for entries or byes.

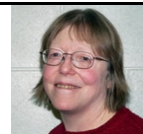
Please be courteous.

Please stay away from non-chess topics.

#### From the Editor

**Volunteer opportunity!** ☺ If you would like to help with the newsletter, please email [News\\_Staff AT MetroWestChess.org](mailto:News_Staff@MetroWestChess.org).

Kate Gasser  
Newsletter Editor



Kate Gasser



Fred Harvey

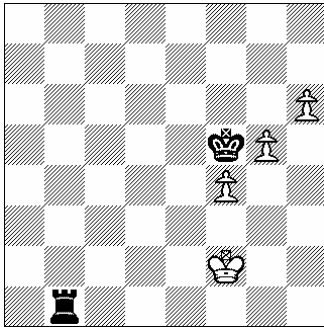
Newsletter Staff

**Stranger than Fiction, Part 1** by Mark LaRocca

Sometimes a wild opening can lead to an even wilder endgame; even when the endgame never occurs, the threat of the endgame is a reason to draw or resign. We, as fans, never see the endgame; but the GM participants do and so agree to a draw as we observers wonder "Why didn't he play this?".

Therefore, before we look at the fantastic anti-Meran, Kasparov – Tal, 1983, we should first take a look at this endgame.

**Diagram 1 - White to play and draw**

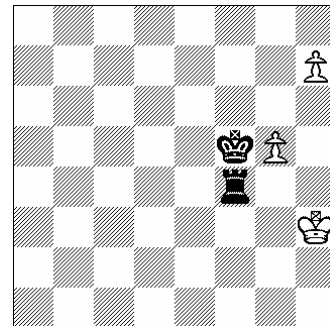


Looking at Diagram 1, at first glance it seems that, with some finesse, Black will surely win. However, this is one ending that is truly "stranger than fiction." Of course, White must be accurate as he can indeed play a losing King move in this position. First, let's see why this should be a draw.

**1.Kg2 Rb2+ 2.Kg3 Rb4 3.Kh3 Rb1** (if 3...Rxf4 4.h7... and Black actually loses – Diagram 2) **4. Kg2** and Black has made no progress.

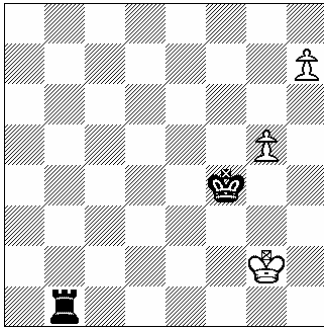
**Diagram 2 – Black to move loses**

After 3...Rxf4 4.h7



**Diagram 3 - Black to play and draw**

After 1. Kg2, Kxf4 2.h7



Nor can Black win with **1.Kg2 Kxf4 2.h7** (Diagram 3). In fact, can he even draw? It looks scary for him. If 3... Rb8 4.g6 and the pawns will queen. So, we are left with only one option. When in doubt, check... the only way to stop the pawns.

**2... Rb2+**

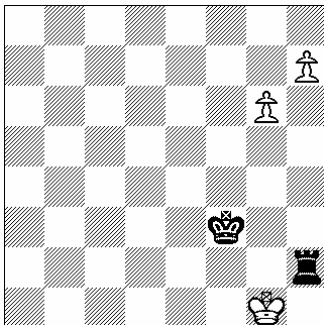
Now if White runs toward the pawns...

**3.Kh3 Rb3+ 4.Kh4 Rb1** (threatens mate) **5. Kh5 Rh1+ 6.Kg6 Rxh7** and draws.

What happens if White runs the other way?

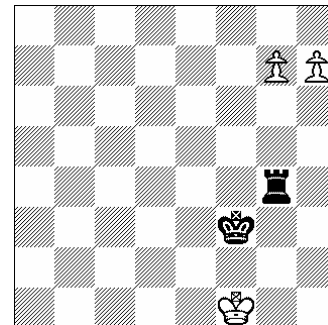
From Diagram 3, after **2...Rb2+ 3.Kf1 Kf3** (threatening mate) **4.Ke1 Rh2** (stopping the h pawn) **5.g6 Ke3 6.Kf1 Kf3 7.Kg1** and now we reach the following an amazing drawn position in Diagram 4.

**Diagram 4 -- Black to play and draw**



Take a minute to think about it and I am sure you will find **7... Rh4!** (Rh5 or Rh6 will also suffice). Now, **8.g7 Rg4+ 9.Kh2 Rh4+ 10.Kg1 Rg4+** and White cannot make progress. If he runs the other way, Black repeats mate threats and then checks on b4 and a4 on the other side. **11.Kf1...** and another position worthy of a diagram has been reached (Diagram 5). **12... Ra4 !** Any other move loses. For example, if **12...Rb4 13.Ke1 Ke3 14.Kd1 Kd3 15.Kc1** and Black cannot stop the pawns as he has no perpetual.

**Diagram 5 -- Black to play and draw**



## COMMUNITY:: Kibitzes

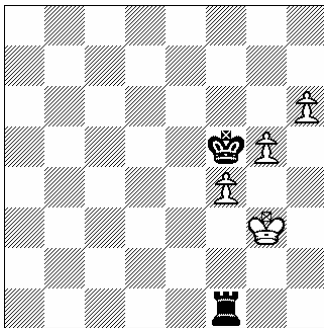
Now, we are starting to understand the initial position in Diagram 1. If Black takes the pawn, White pushes one of his advanced pawns and the pawns will make a Queen.

Finally, what was White's losing move in the initial position? If White plays **1.Kg3** he loses.

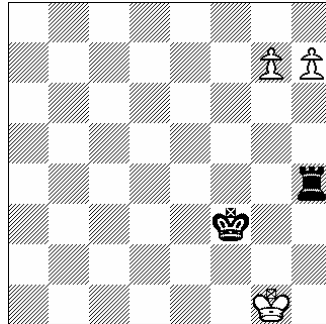
This is why Black plays on in such positions. Realistically, only Black can win. Black's winning move here is **1... Rf1!** Now if **2.Kg2, 2... Rxf4 3.h7 Rh4** wins. And if **2.Kh3, 2... Rf3+!** (not **2... Kxf4 3.Kg2! Ra1 4.h7 Ra2+** and Black draws with the method in Diagram 2 above) **3.Kg2 Rxf4** wins. Also, from Diagram 1, **1.Kf3 Rg1!** wins for Black: **2.Kf2 Rg4 3.Ke3...** (else Black captures the f pawn with check). **3... Rh4** and White must abandon the pawn or allow **Rxf4+**.

So, we have learned that in the initial position of Diagram 1 Black strives to grab the first rank and hopes that White blunders with **Kf3** or **Kg3**. When Black holds the first rank with his Rook, White must control the f1 and g1 squares with his King. Strangely, Black to move in Diagram 6 below only draws.

**Diagram 6 - White to move loses, Black to move draws**



**Diagram 7 - Black to move draws**



We also have learned that Black can draw by perpetual in Diagram 7. Both these drawn endgames and the attached technique are essential knowledge. In fact, both have occurred in my games. I actually won the Rook side of the initial position and lost the Rook side of Diagram 7.

But what does all of this have to do with Openings?... not much... Yet, I was struck by the drawing position in a game played by two of the great players of all time.

But, let's keep the suspense and save this amazing "Stranger than fiction" opening for next month. #

### Recent MCC Website Member Contributions

George Duval	Three essays	<a href="#">link</a>
Howard Goldowsky	Two book reviews	<a href="#">link</a>
Ilya Krasik	Three position analyses	<a href="#">link</a>
Derek Slater	Twenty annotated games	<a href="#">link</a>
Mark Kaprielian	Links to categories of contributions	<a href="#">link</a>

### Note to Readers: How to contribute annotated games & positions; essays; letter to editor.

**Contributions to Kibitzes**      Email to News\_Staff AT MetroWestChess.org.  
Must in MS Word or Chessbase format      **Deadline for next newsletter: Nov. 22**

**Letters to Editor**      Email to News\_Staff AT MetroWestChess.org.  
We want your feedback!      **Deadline for next newsletter: Nov. 28**

**Contributions to Website (MCC members only)**      Email to Games AT MetroWestChess.org

## COMMUNITY :: Special 2005 Calendar Announcement

### Chess School

Second Thursdays  
at 7:00 PM, June-  
November

**Register NOW –**  
it's never too late!  
Mark\_LaRocca AT  
cca-int.com

Class 6      Thurs. November 10 with **IM James Rizzitano !!**

### US Chess League

Wednesday  
evenings  
Aug. 30 – Nov. 2  
(Start times vary,  
see schedule)



**Volunteers needed  
to relay moves  
and cheer on our  
team!**

### Watch the “Boston Blitz” play at the Club!

#### Team

1. GM Larry Christiansen - 2633
2. IM Eugene Perelshteyn - 2592
3. IM Igor Foygel – 2536
4. IM (elect) Josh Friedel – 2491
5. FM William Kelleher - 2392
6. FM Paul Mac Intyre - 2342
7. NM Charles Riordan - 2271
8. Ilya Krasik - 2185

#### Schedule

7:00 pm  
11/2 Baltimore Kingfishers

The first season of the US Chess League is in full swing! Come witness history as the Boston Blitz play their matches at the MetroWest Chess Club via the Internet Chess Club. Show your support for your local team and watch some exciting, world-class chess.

We also need volunteers to act as “movers.” If you have ever used a computer program to play chess or to enter moves into a database, you can help. Familiarity with the interface for the Internet Chess Club would be even better. “Movers” typically sit across from the team player and play his opponent’s move as soon as it’s displayed on the computer. Then, they enter the response of the Boston player when he executes it on the board. As a “mover,” you’ll be an almost integral part of a game between Masters. Think of what such participation could do for your own game! If you’d like to volunteer, please contact "info at metrowestchess.org."

**Schedules, latest results and game analysis at**  
[www.uschessleague.com](http://www.uschessleague.com)

## COMMUNITY :: Club and Partner Calendar

<p><b>Tuesday, November 1</b> 7:30 pm</p>	<p><b>Round 1 – MCC Stanley Crowe Memorial Swiss</b> Weekly group lesson at 6:30– John Chamberlain on basic tactics.</p>
<p><b>Wednesday, November 2</b> 7:00 pm</p>	<p><b>Round 10-- US Chess League</b> Boston Blitz vs. Baltimore Kingfishers <b>Come and boost our team!</b></p>
<p><b>Wednesdays in October</b> 6:30 pm</p>	<p><b>GWCC November's Noteworthy Open</b> November 2, 9, 17 For information, click <a href="#">here</a></p>
<p><b>Tuesday, November 8</b> 7:30 pm</p>	<p><b>Round 2 – MCC Stanley Crowe Memorial Swiss</b> Weekly group lesson at 6:30– John Chamberlain on basic tactics <b>BooksFromEurope</b> Proprietor Emanuel Rasin</p>
<p><b>Thursday, November 10</b> 7:00 pm</p>	<p><b>Chess School, Opening Repertoire, Class 6</b> With IM Jim Rizzitano</p>
<p><b>Tuesday, November 15</b> 7:30 pm</p>	<p><b>Round 3 – MCC Stanley Crowe Memorial Swiss</b> Weekly group lesson at 6:30 – John Chamberlain on basic tactics</p>
<p><b>Friday – Sunday, November 18-20</b></p>	<p><b>NorthEast Chess Fall Getaway</b> Radisson Hotel, Marlboro <a href="#">More info.</a></p>
<p><b>Tuesday, November 22</b> 7:30 pm</p>	<p><b>Round 4 – MCC Stanley Crowe Memorial Swiss</b> Weekly group lesson at 6:30– George Mirijanian presents a John Curdo game from club archives.</p>
<p><b>Tuesday, November 29</b> 7:30 pm</p>	<p><b>Round 5 – MCC Stanley Crowe Memorial Swiss</b> Weekly group lesson at 6:30– John Chamberlain on basic tactics.</p>

## COMMUNITY :: Club and Partner Activities and Info

### CLUB

#### Board of Directors

To learn more about our governance, visit [http://www.metrowestchess.org/Community/Club/Governance/Top\\_Governance.htm](http://www.metrowestchess.org/Community/Club/Governance/Top_Governance.htm)

Contact Mark (Kappy) Kaprielian, President  
[MKaprielian AT MetroWestChess.org](mailto:MKaprielian@MetroWestChess.org)



### PARTNER

#### NorthEast Chess

- Organizer Severine Wamala
- [swamala AT hotmail.com](mailto:swamala@hotmail.com)
  - Email and PayPal™
- 219 Central St Lowell, MA 01852
- 978-453-4342 (night)



### PARTNER

#### Greater Worcester Chess Club

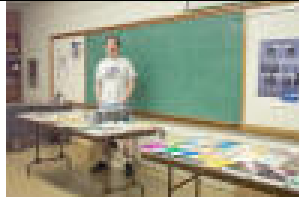
- Organizer Donna Alarie
- [Donnachesspals AT aol.com](mailto:Donnachesspals@aol.com)
  - Email
- 508-847-8574 (night)
- [www.chesspals.com](http://www.chesspals.com)



### PARTNER

#### Stateline Chess – Round 1

- Proprietor Randi Malcuit
- [statelinechess AT hotmail.com](mailto:statelinechess@hotmail.com)
  - Email and PayPal™



### PARTNER

#### Books from Europe – Round 2

- Proprietor Emanuel Rasin
- [www.BooksFromEurope.com](http://www.BooksFromEurope.com)



## COMPETE :: MCC Stanley Crowe Memorial

### NEXT TOURNAMENT!

<b>When</b>	Tuesdays at 7:30 pm November 1,8,15,22,29		<b>Prizes</b>
<b>Format</b>	5-SS, 40/90, SD/30	<b>Open</b>	\$200-120-80
<b>Sections</b>	Open, U1750, U1450	<b>U1750</b>	\$120-80-40
<b>Prize Fund</b>	\$ 800 Guaranteed	<b>U1450</b>	\$80-50-30
<b>Entry Fees</b>	Masters                      Free MCC Members              \$20 Others                          \$25		<b>Championship Points</b>
		<b>Open</b>	80-40-20
		<b>U1750</b>	30-15
		<b>U1450</b>	10
			50% bonus for perfect score

## COMPETE :: Monthly and Championship Tournaments

Section results below – Print them and show your friends 😊



Jim Krycka  
Monthly Tournaments Director



**OCTOBER 2005  
TOURNAMENT  
RESULTS**

**OPEN SECTION**

**1st Place 3.5 / 4 points**



**FM John Curdo**

**2nd Place Tie 3.0 / 4 points**



**Ilya Krasik**



**David Harris**

**Upsets over 200 points**



**Nick Konovalchuk**





## OCTOBER 2005 TOURNAMENT RESULTS

### U1850 SECTION

#### 1st Place 3.5 / 4 points



**Neil Cousin**

#### 2nd Place Tie 3.0 / 4 points



**Robert Harvey**



**Bill Michael**



**Lior Rozhansky**

#### Upsets over 200 points



**Tim Bromley**



**Chris Galli**



**Jacob Gillis**



**Lior Rozhansky**



**Plamen Krastev**



**OCTOBER 2005  
TOURNAMENT  
RESULTS**

**U1600 SECTION**

**1st Place Tie 3.5 / 4 points**



**James Rafferty**



**Stephen Schnair**



**Eli Kariv**

**Upsets over 200 points**



**Gregory Cermak**



# MetroWest Chess Club

Largest Chess Club in New England

Serving the MetroWest Boston chess community since 1983

**OCTOBER 2005  
TOURNAMENT  
RESULTS**

**U1300 SECTION**

**1st Place 3.5 / 4 points**

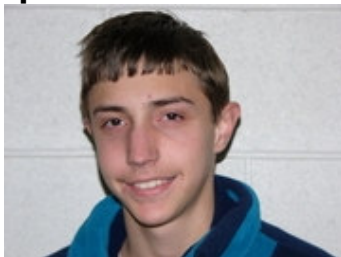


**Anirudh Arun**

**2nd Place Tie 3.0 / 4 points**



**William Skog**



**Travis Nilsson**

**Upsets over 200 points**

**None**

## COMPETE:: Club and Class Championship Qualification As of End of October 2005

Neil Cousin is the new leader in the Class Championship standings. Neil's clear 1<sup>st</sup> in the October U1850 section combined with two earlier ties for 1<sup>st</sup> in U1900 sections has earned him the top spot. It also puts him in contention for an invitation to the Club Championship. Last month FM John Curdo, David Harris, and Ilya Krasik strengthened their positions in the Club Championship race by placing in the October Open section.

Only two tournaments remain in the qualification cycle for the 2006 Club and Class Championships. IM James Rizzitano must play in the last two events to meet the minimum tournament requirement or he will be dropped from the list. The current standings (in tie break order) are as follows:

<b>Club Championship Qualifying Points</b>	<b>Class Championship Qualifying Points</b>
1. IM Igor Foygel 475	1. Neil Cousin 60
2. FM John Curdo 323	2. Severine Wamala 53
3. John Chamberlain 142	3. Nick Konovalchuk 50
4. David Harris 126	4. Calvin Hori 42
5. Ilya Krasik 100	5. Matthew Phelps 42
6. Jacob Wamala 74	6. William Michael 40
7. IM James Rizzitano (2) 66	7. Larry Eldridge 36
8. Neil Cousin 60	8. Tarmo Saar 35
9. Severine Wamala 53	9. Robert Harvey 34
10. Nick Konovalchuk 50	10. John Stengrevics (3) 23

*Everyone listed above has met the 4-tournament qualifying rule except for those marked as having played in one (1), two (2), or three (3) tournaments this year.*