

Pinches takes charge at Framingham club

By Harold B. Dondis
Special to the Globe

Warren Pinches, a gentleman of remarkable energy who lives in the Back Bay, is one of the founders of the Framingham Chess Club and has brought it forward as one of the finest chess clubs in New England.

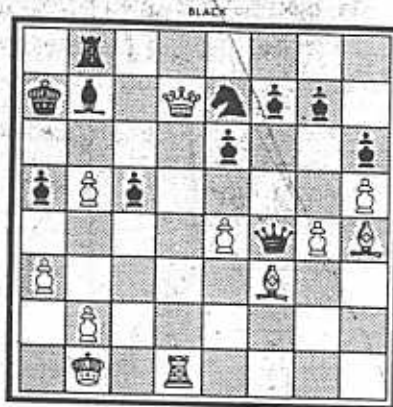
Pinches has been the factotum of the club, which meets at the American Legion Hall, Beech and Franklin streets in Framingham. He sends out a regular newsletter called News Watch. This bulletin includes games from Framingham's regular Tuesday night tournament games and from the weekend tourney that Framingham runs. These weekend tournaments are now being coordinated with those at the Billerica Chess Club.

Pinches also puts out pre-event and post-event bulletins on the various tournaments.

Up to now, Pinches has performed all the work from directing to publishing, but recently he realized that the work was a bit much. He solved the problem in typical Pinches fashion: He sent out notices with the club's bulletins, announcing jobs that he needed to be filled at the club.

Pinches was typically efficient and very specific in his notices. The notices established separate duties, such as setting up the room, cleaning up, directing tourneys and preparing the newsletter. He even designated the particular items of work to be performed.

When Pinches first put out his notices, there was a stir in the club, some feeling that the club might be on the skids. But, since then, many members have stepped forward and enthusiastically filled the positions. According to Pinches, the system is working well, and the Framingham Chess Club is alive, healthy and percolating like the big coffee pot that serves the Framingham chessplayers.



Gotchal White to move and win. Answer elsewhere on page.

QUEEN'S INDIAN DEFENSE

Kasparov	Van der Wiel	Kasparov	Van der Wiel
White	Black	White	Black
1. P-Q4	N-KB3	17. P-R5	R-Q2
2. P-QB4	P-K3	18. R-B1	R-QB1 (d)
3. N-KB3	P-QN3	19. B-K2	K-R2
4. P-QR3 (a)	B-R3	20. KR-Q1	R/2-Q1
5. Q-B2	B-N2	21. P-N4	N-N1
6. N-B3	P-B4	22. B-N3	N-K2
7. P-K4	PxP	23. P-B4	N/4-B3
8. NxP	B-B4	24. B-B3	R-QN1 ?!
9. N-N3 (b)	N-B3	25. B-R4	R-Q2 (e)
10. B-N5	P-QR3	26. N-N5 ch !	PxN
11. O-O-O (c)	Q-B2	27. PxP	N-R4 (f)
12. K-N1	O-O-O	28. NxN	PxN
13. Q-Q2	P-Q3	29. RxB !	PxR
14. P-B3	P-R3	30. QxR	QxP
15. B-B4	N-K4	31. R-Q8 !	Resigns (g)
16. P-KR4	K-N1		

- (a) Kasparov returns to one of his original pet variations.
- (b) Trying to keep the N at Q4 by 9. B-K3 invites the annoying N-N5.
- (c) This has all been played before and favors white with space and center control.
- (d) Black marks time because his natural freeing move ... P-Q4 is too risky.
- (e) Losing! Instead 25 ... K-R1 keeps the onus on White.
- (f) More hope exists in the unclear 27 ... N-Q1 28. NxN NPxN 29. RxP ! Q-N3 ! (best).
- (g) Because 31 ... K-R1 32. Q-B7 ! and 31 ... R-QB1 32. BxN QxB 33. R-R6 ch K-N1 34. B-Q6 ch both lose.

CHES ANSWER

White's 31. R-g6!, from today's game, which threatens 32. R-R6 checkmate.