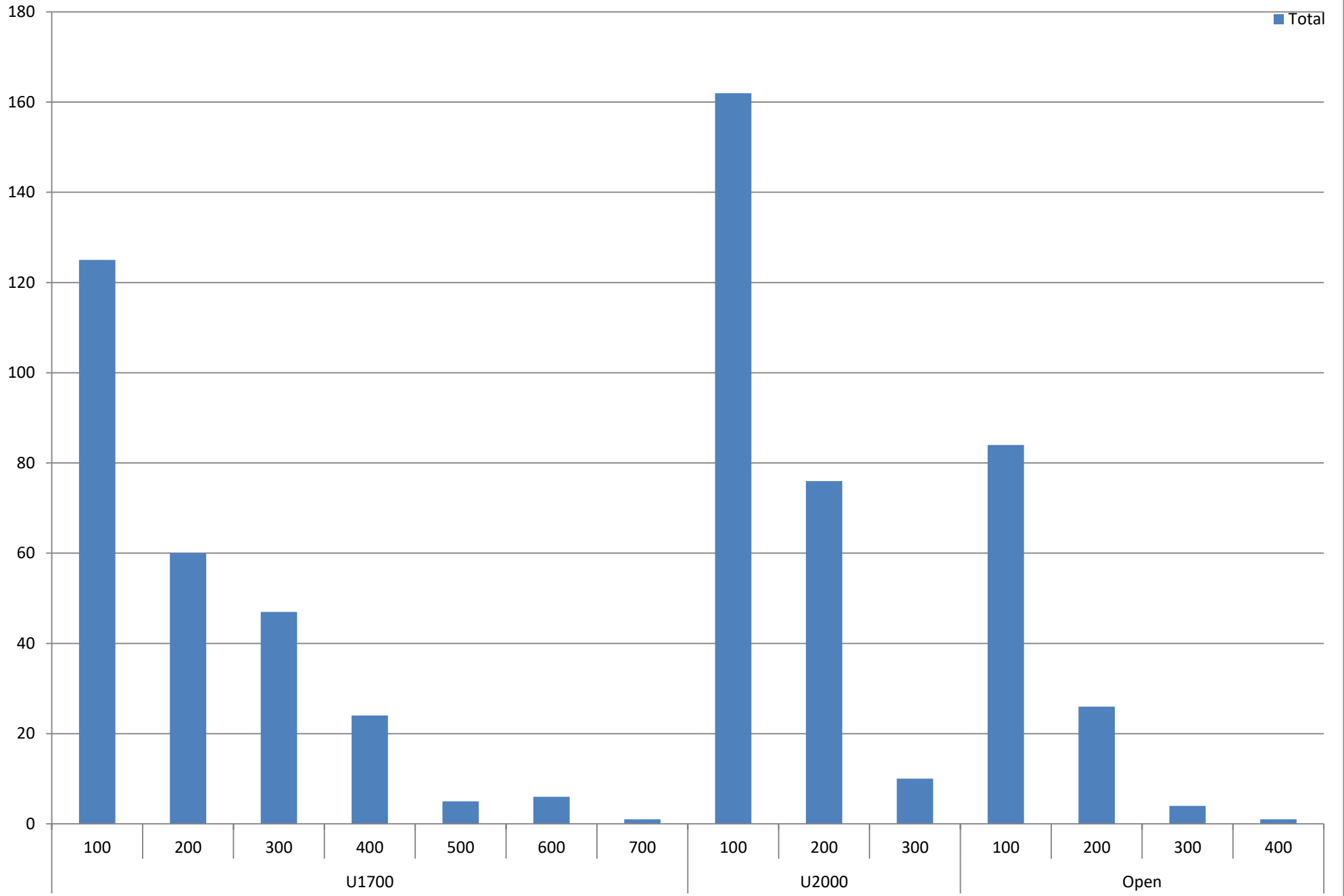


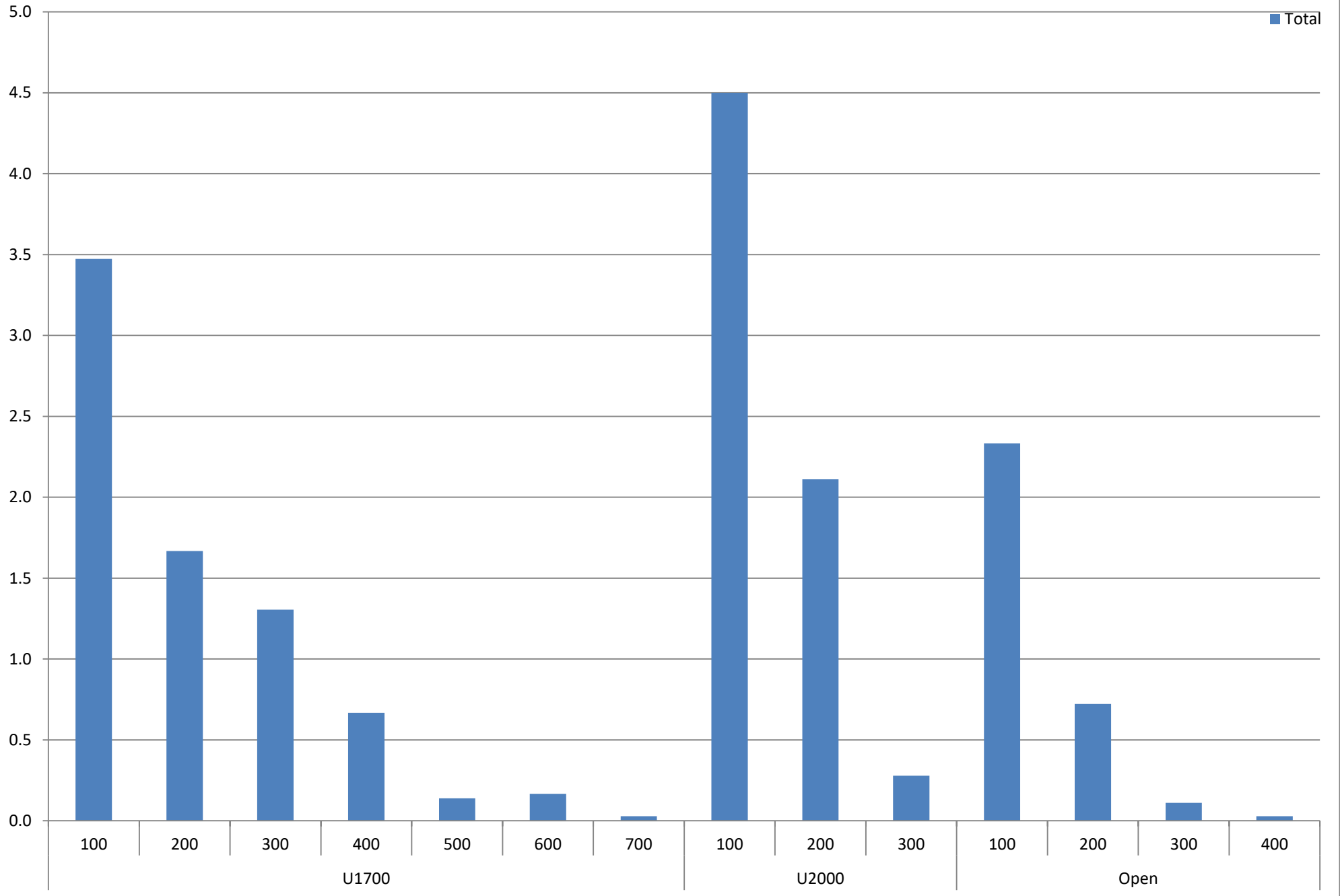
## Charts in this PDF

- 1 Number of players in a section - playing up from a lower section
- 2 Number of players in the Open Section - playing up from a lower section
- 3 Number of players in the U2000 section - playing up from a lower section
- 4 Number of players in the U1700 section - playing up from a lower section
- 5 Percentage of players in a section - playing up from a lower section
- 6 Percentage of players in the Open section - playing up from a lower section
- 7 Percentage of players in the U2000 section - playing up from a lower section
- 8 Percentage of players in the U1700 section - playing up from a lower section
- 9 Total times a player played up - and was within N points of their natural sections ceiling - (most recent 3 years)
- 10 Average of how many times a player played up - and was within N points of their natural sections ceiling - (most recent 3 years)

**Total times a player played up  
and was within N points of their natural sections ceiling**  
(most recent 3 years)

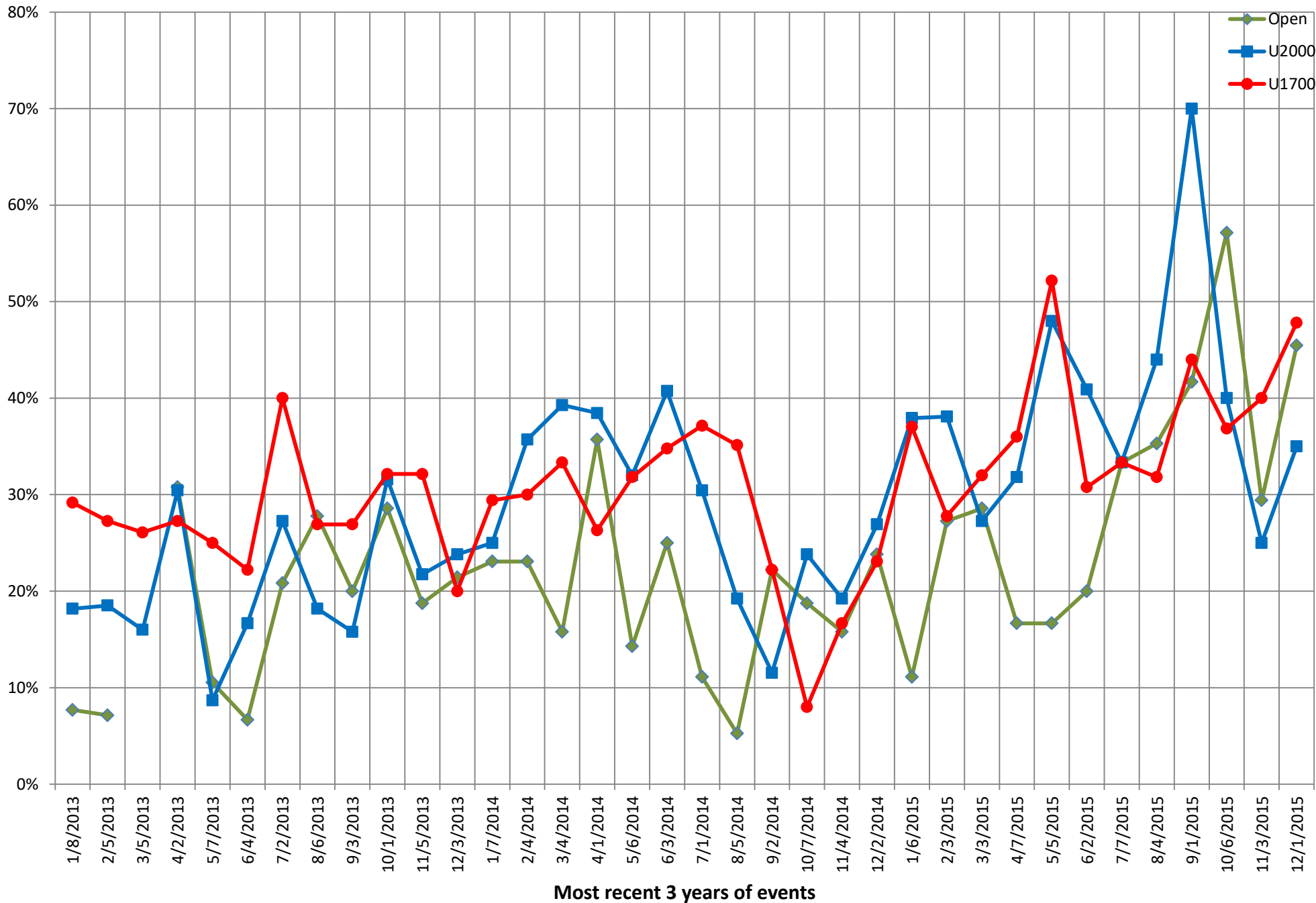


**Average of how many times a player played up  
and was within N points of their natural sections ceiling**  
(most recent 3 years)



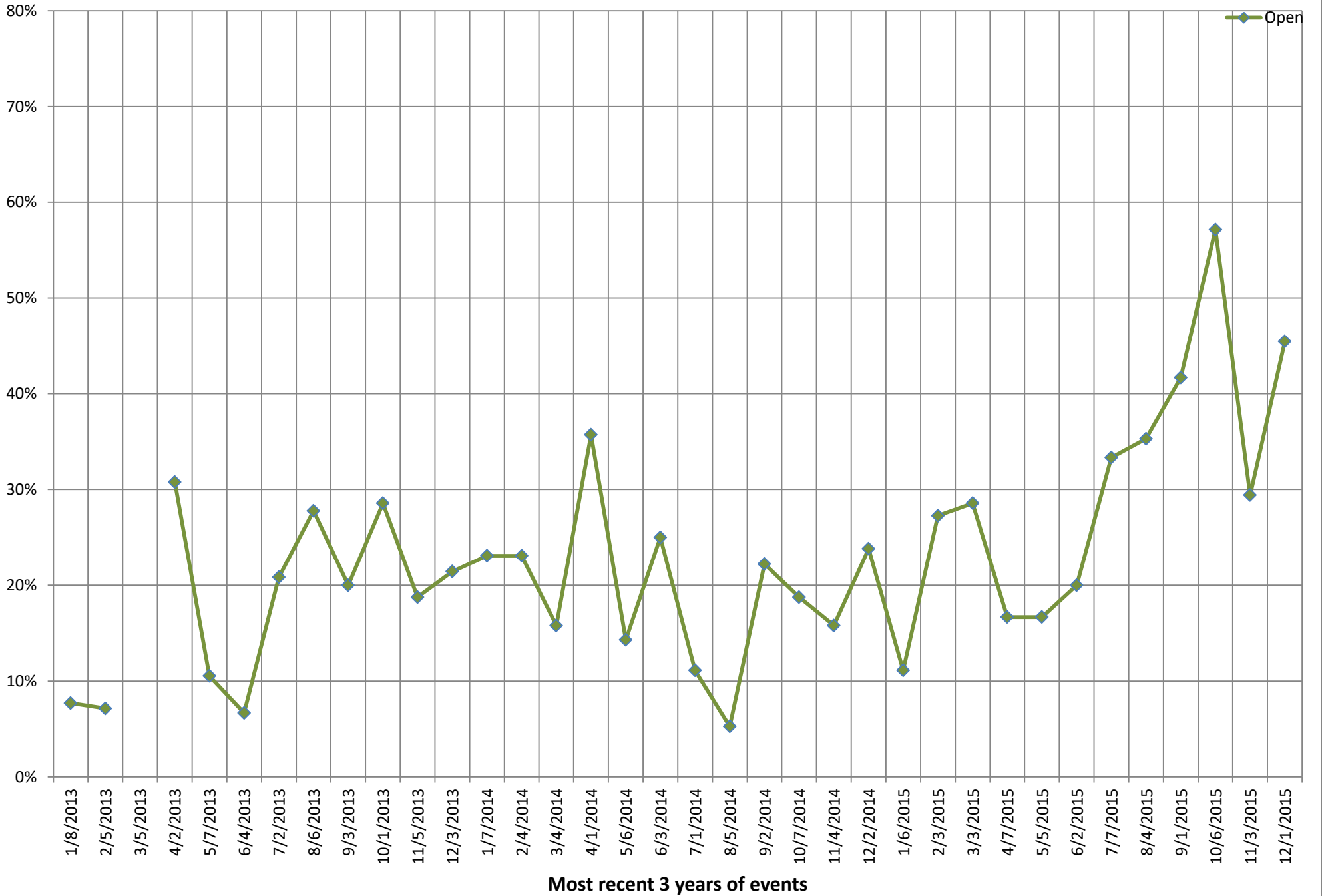
# Percentage of players in a section

playing up from a lower section



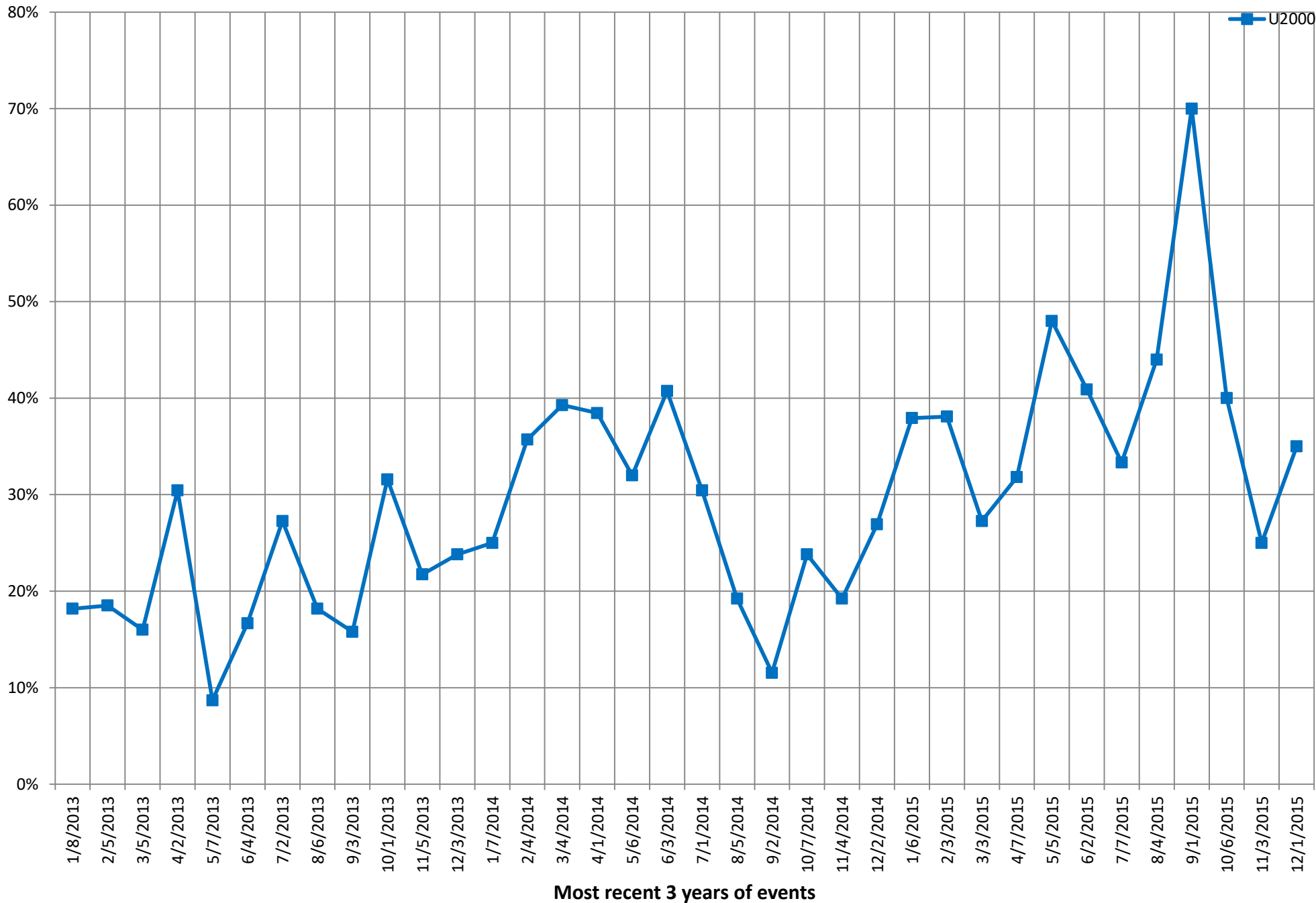
# Percentage of players in the Open section

playing up from a lower section

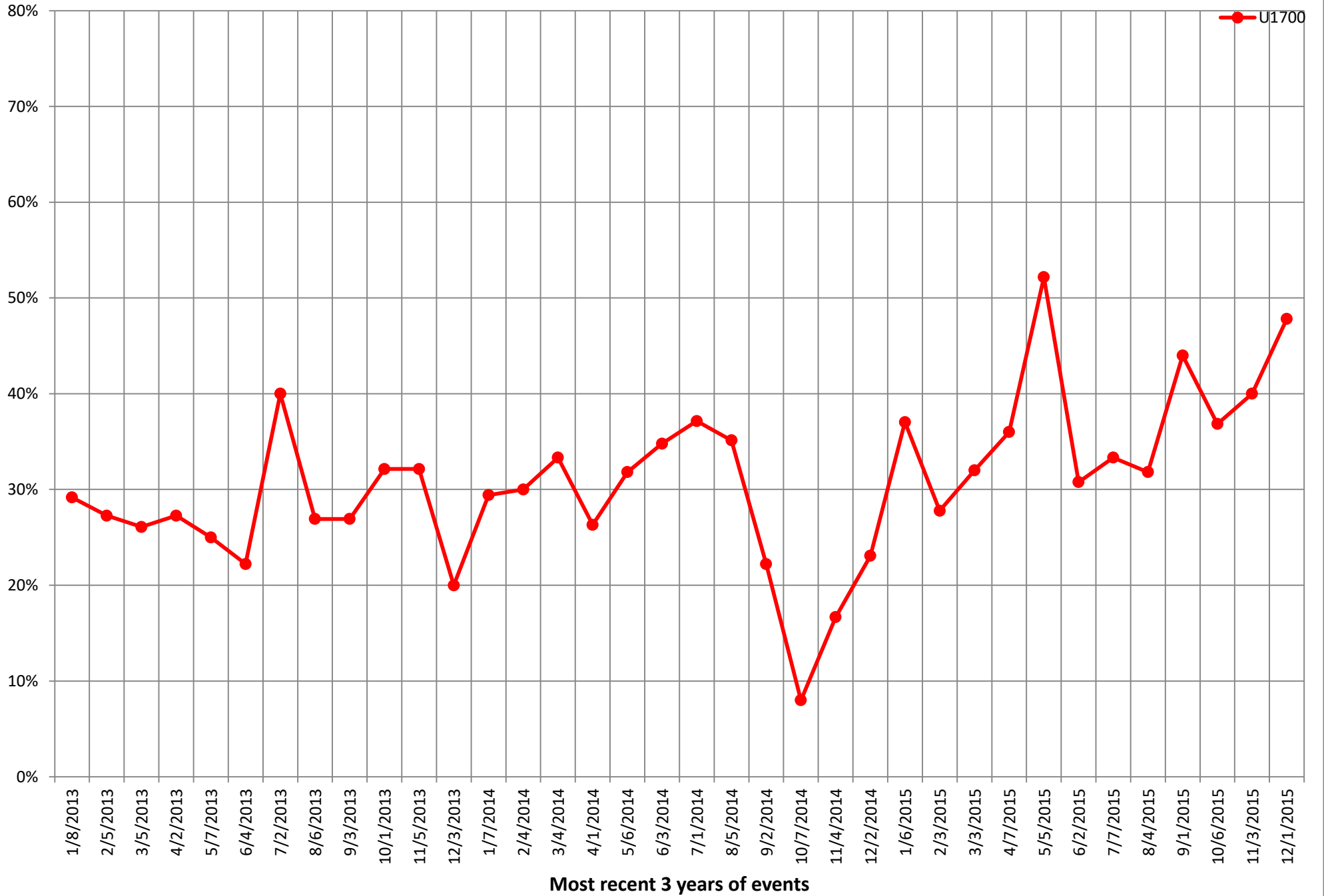


# Percentage of players in the U2000 section

playing up from a lower section



# Percentage of players in the U1700 section playing up from a lower section



# Number of players in a section

playing up from a lower section

- Open
- U2000
- U1700

0

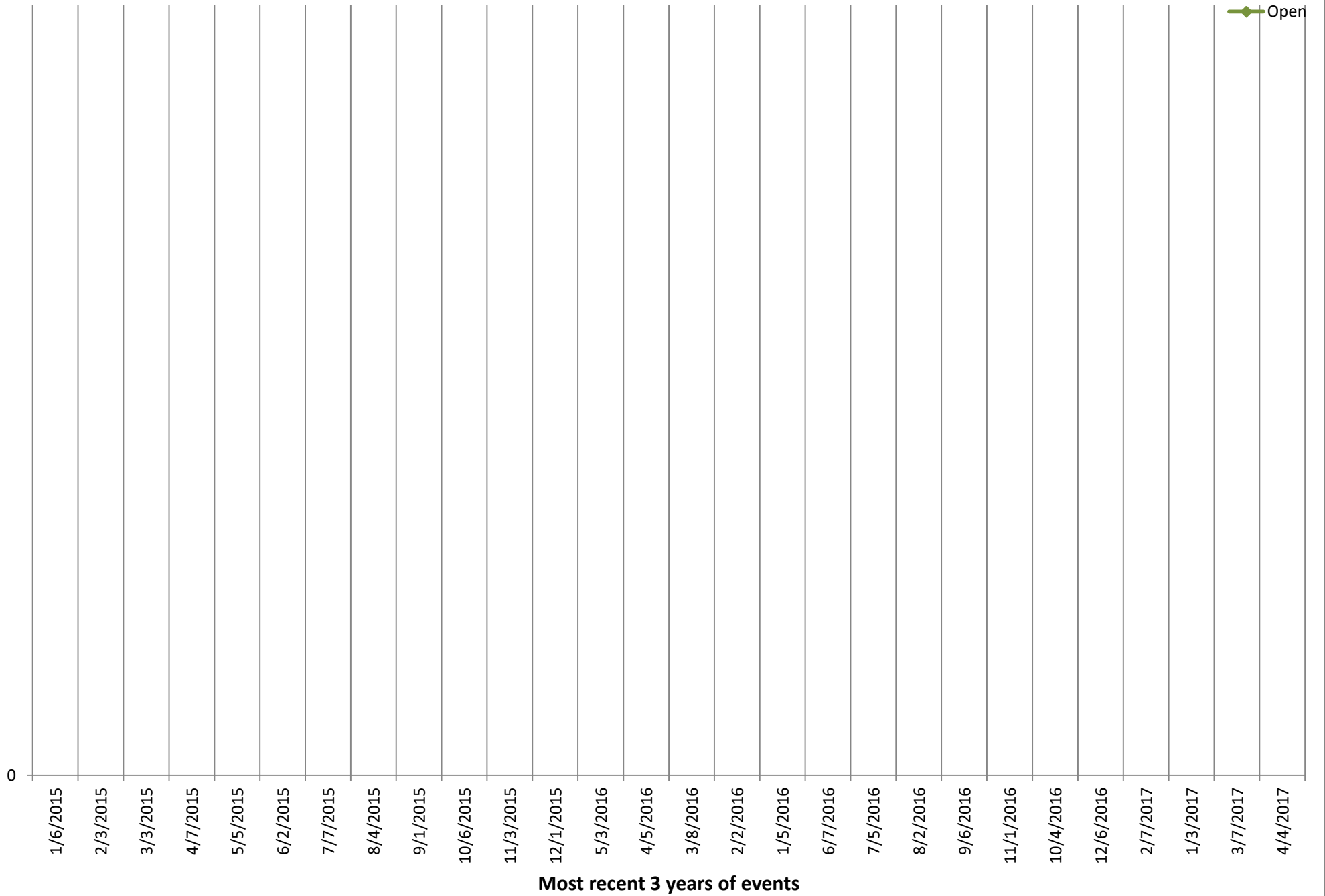
1/6/2015  
2/3/2015  
3/3/2015  
4/7/2015  
5/5/2015  
6/2/2015  
7/7/2015  
8/4/2015  
9/1/2015  
10/6/2015  
11/3/2015  
12/1/2015  
5/3/2016  
4/5/2016  
3/8/2016  
2/2/2016  
1/5/2016  
6/7/2016  
7/5/2016  
8/2/2016  
9/6/2016  
11/1/2016  
10/4/2016  
12/6/2016  
2/7/2017  
1/3/2017  
3/7/2017  
4/4/2017

Most recent 3 years of events



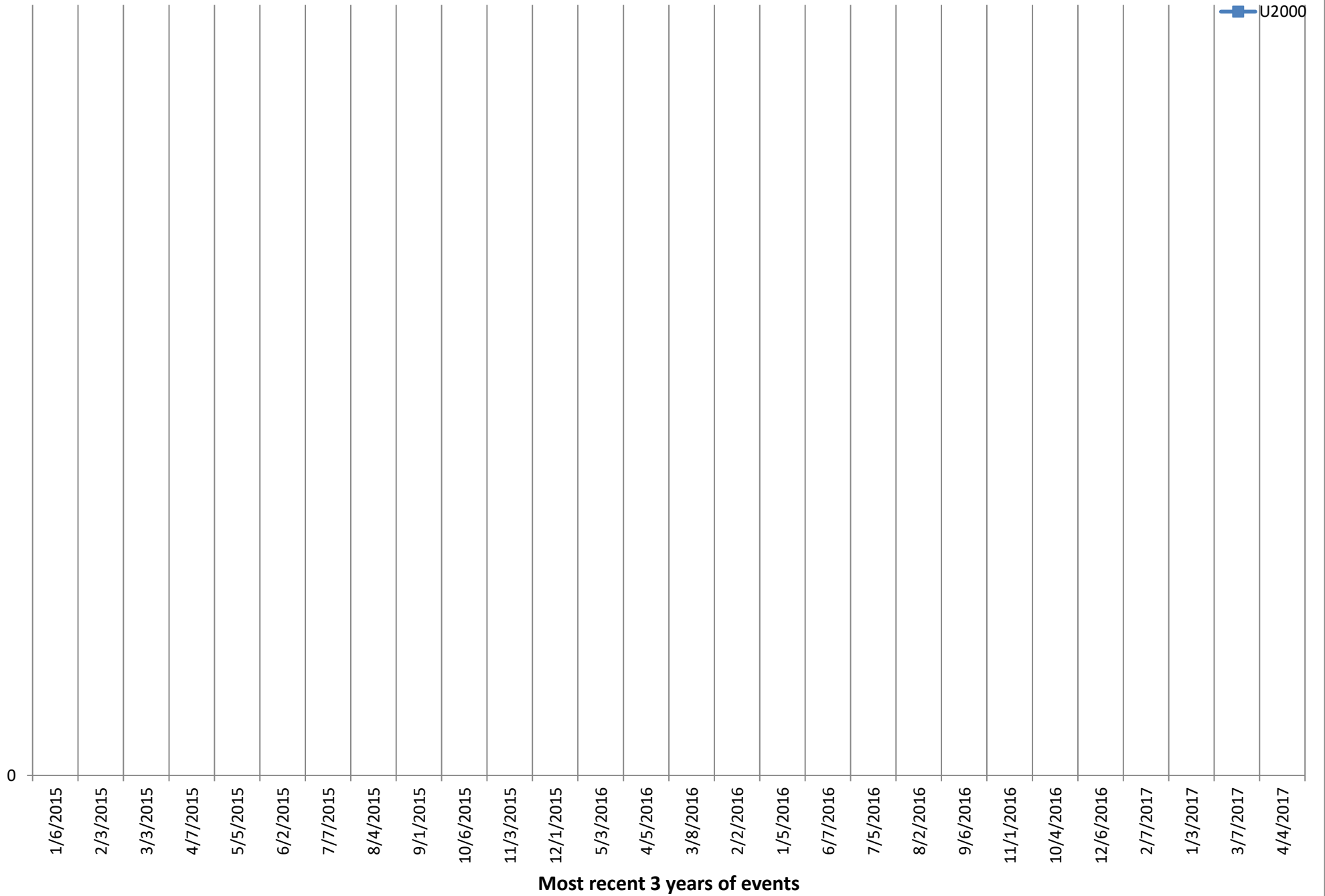
# Number of players in the Open Section

playing up from a lower section



# Number of players in the U2000 section

playing up from a lower section



# Number of players in the U1700 section

playing up from a lower section

