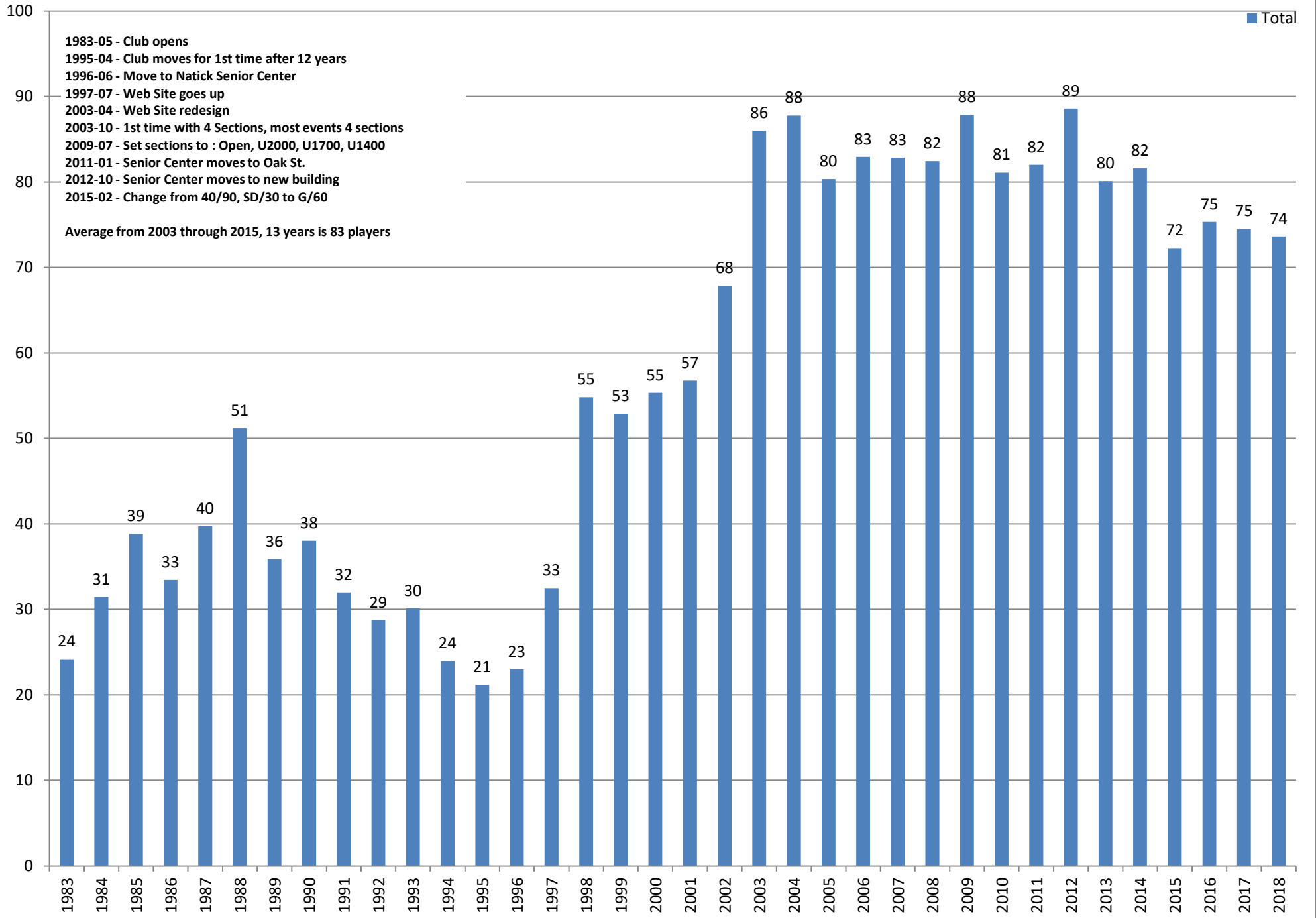


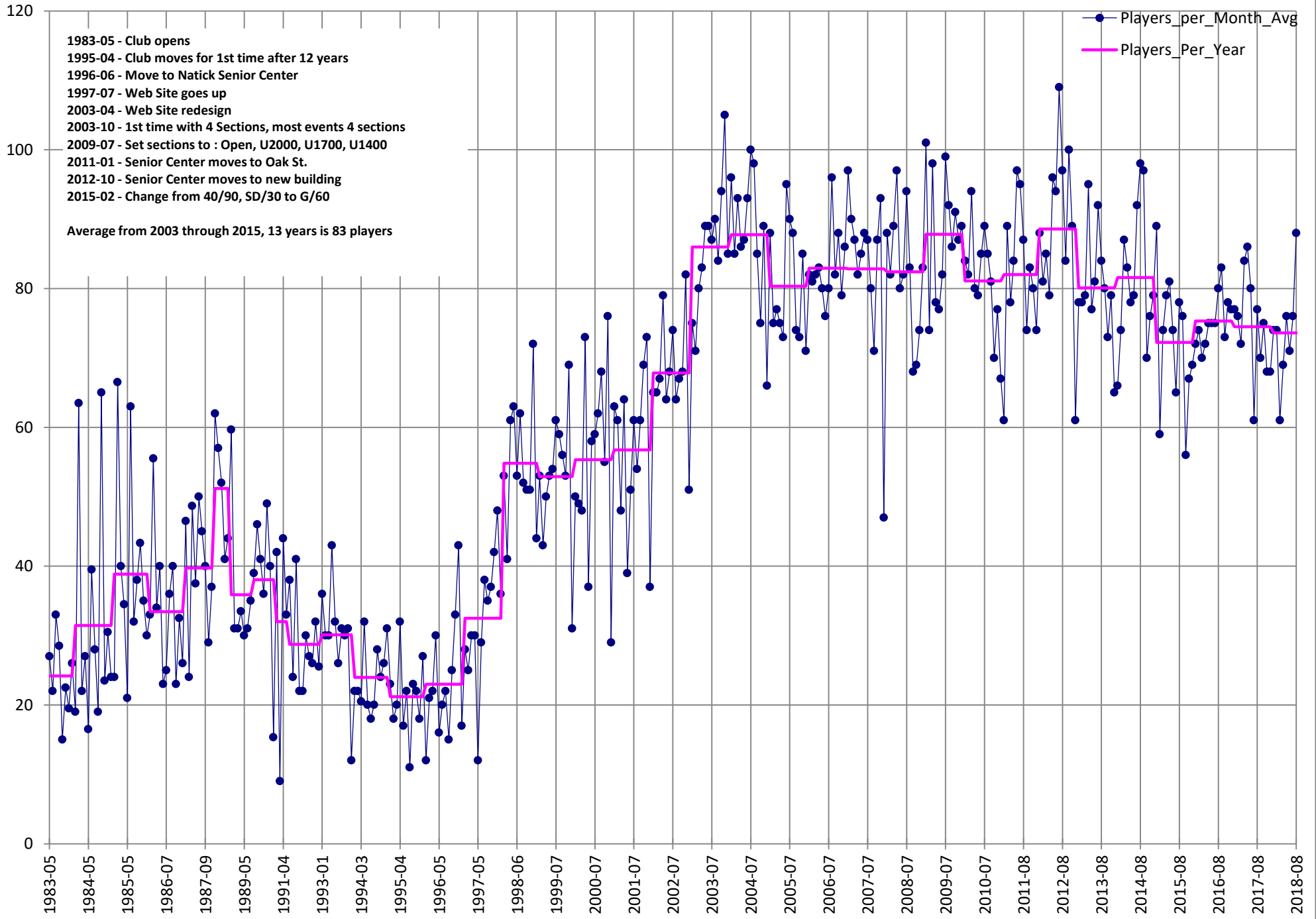
Charts in this PDF

- 1 Average Attendance per Month
- 2 Average Attendance by Month detailed
- 3 Attendance by Month over last 3 years
- 4 Attendance Trend
- 5 Attendance per Month per Section
- 6 Attendance per Month per Section 3D view
- 7 Attendance per Month per Section - Difference from the ideal of 20 players per section

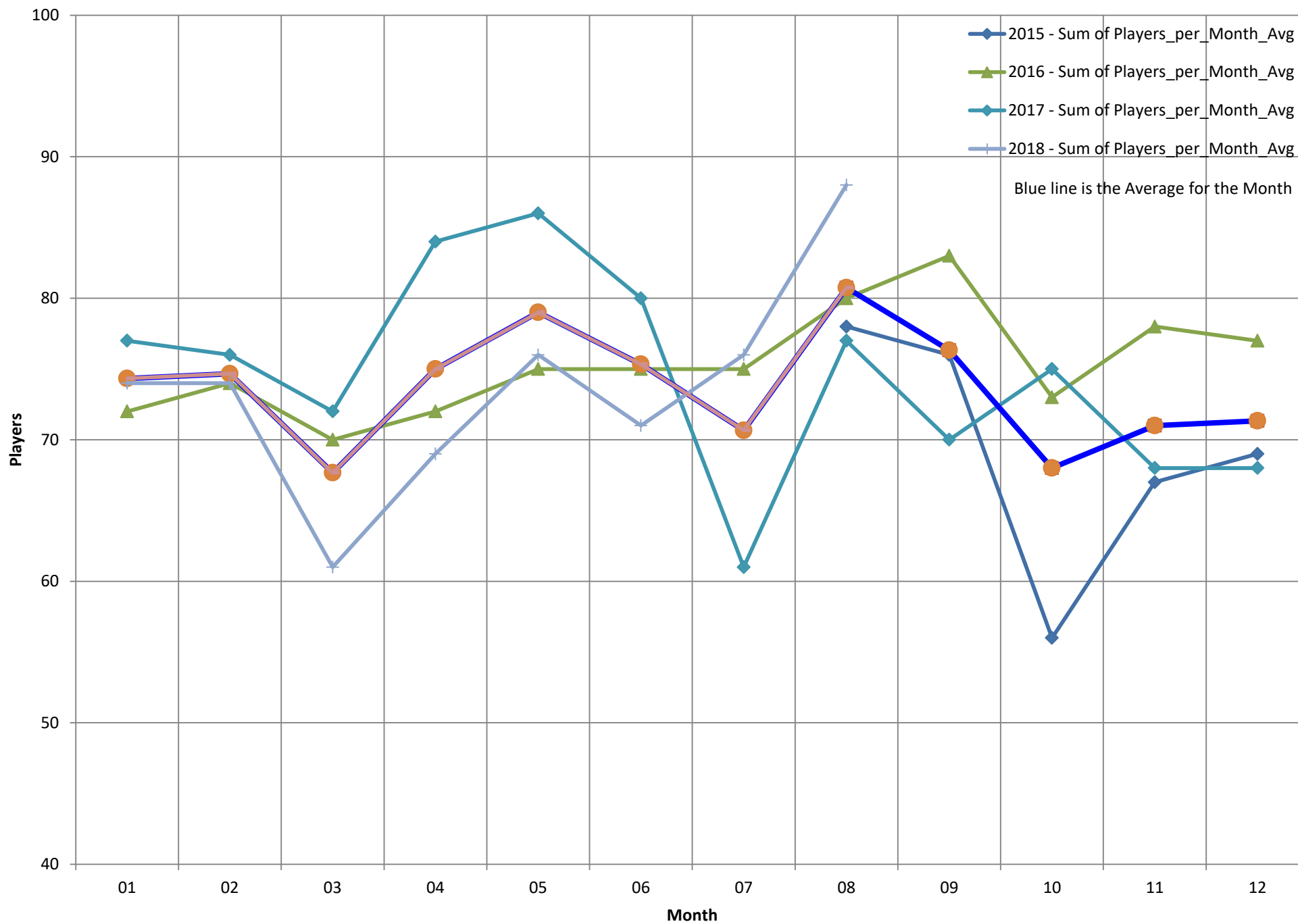
Average Attendance per Month



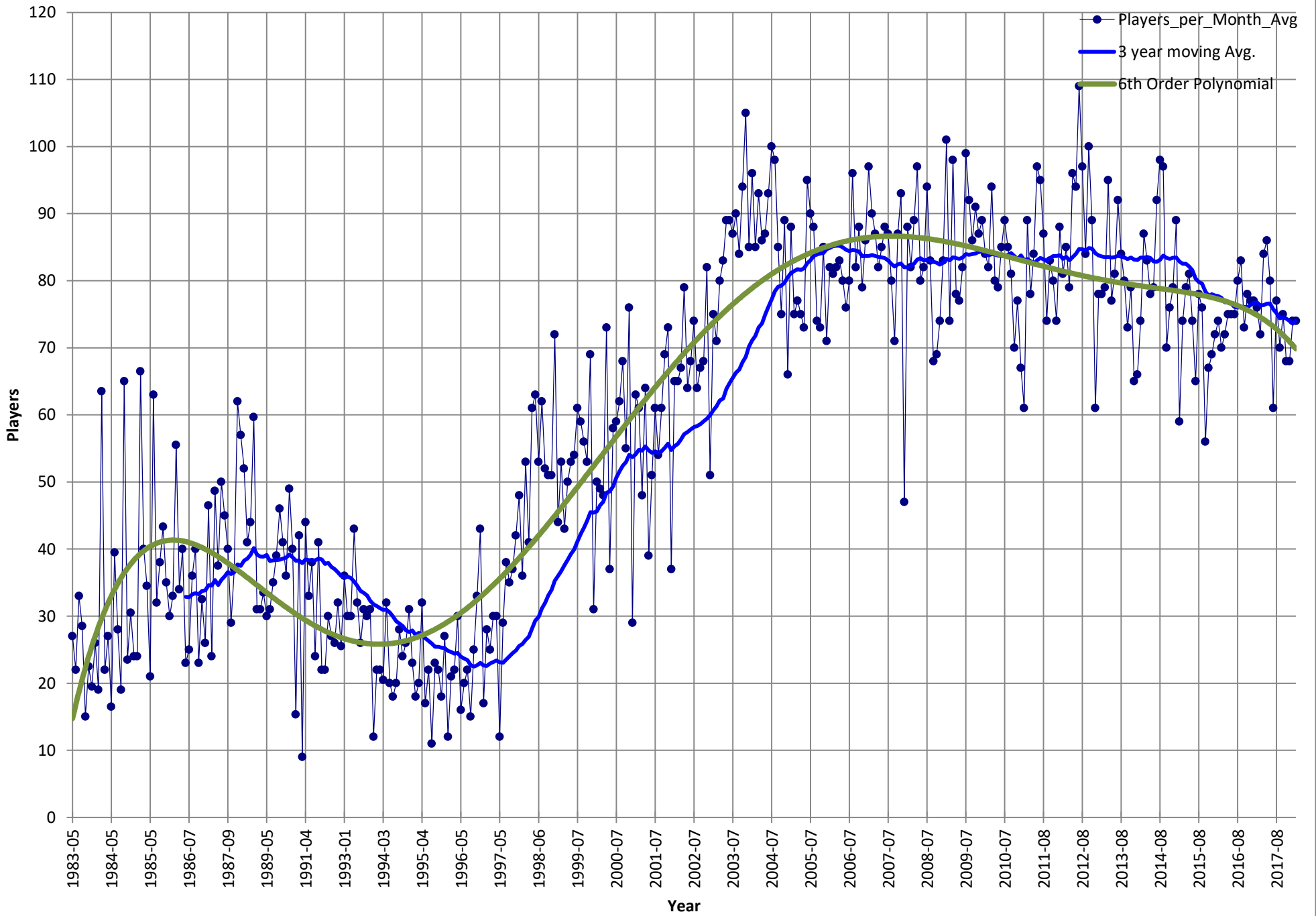
Average Attendance by Month detailed



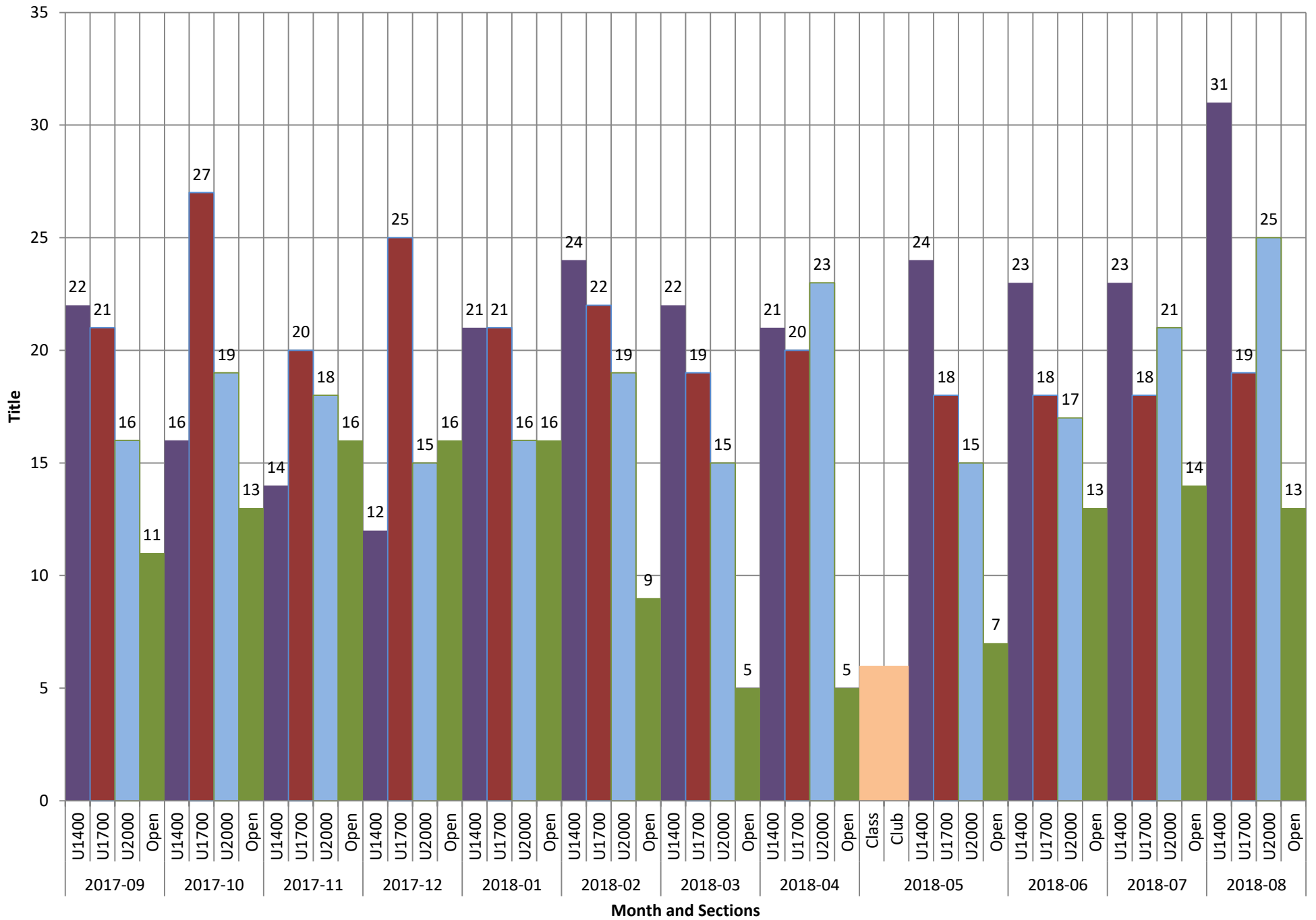
Attendance by Month over last 3 years



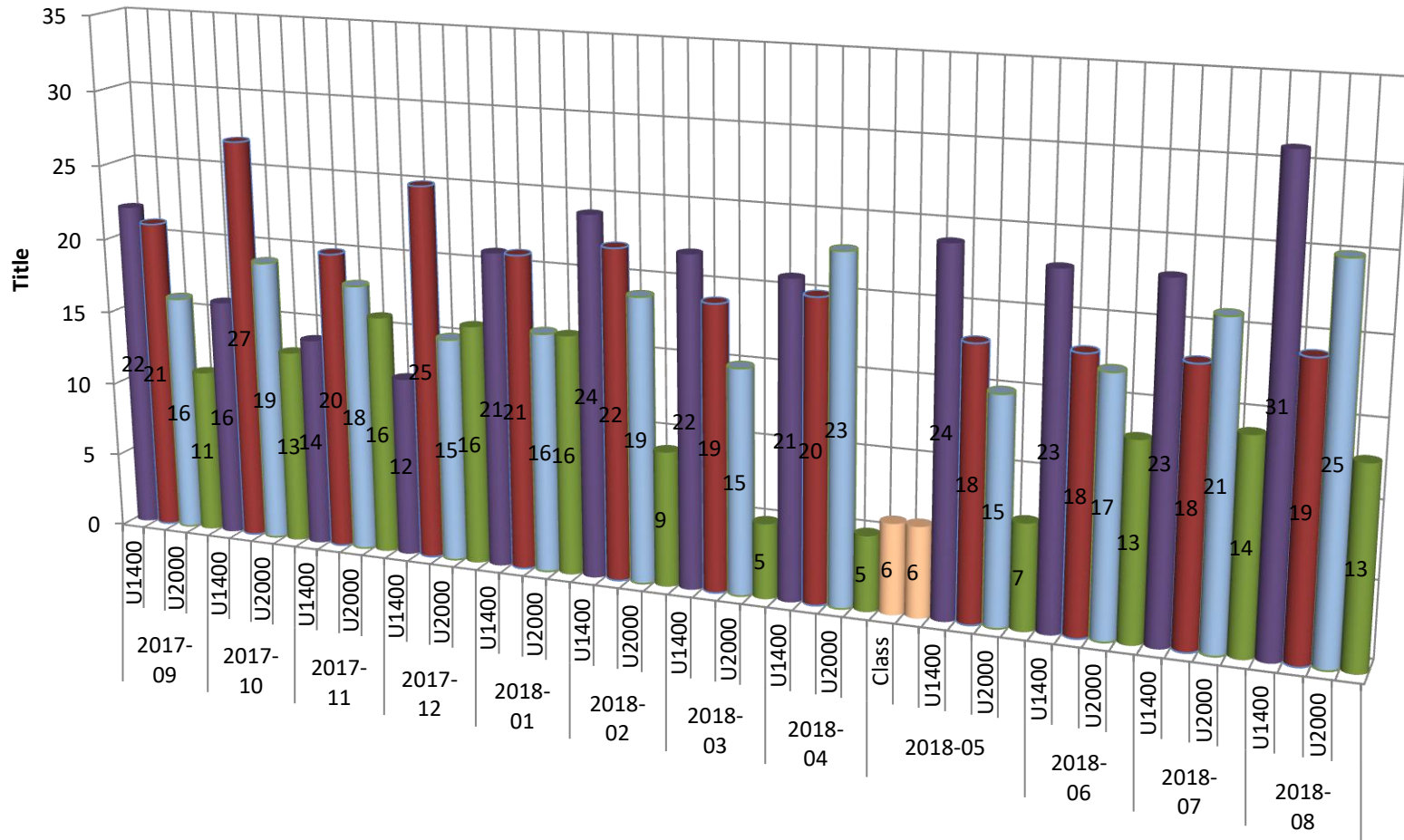
Attendance Trend



Attendance per Month per Section



Attendance per Month per Section 3D view

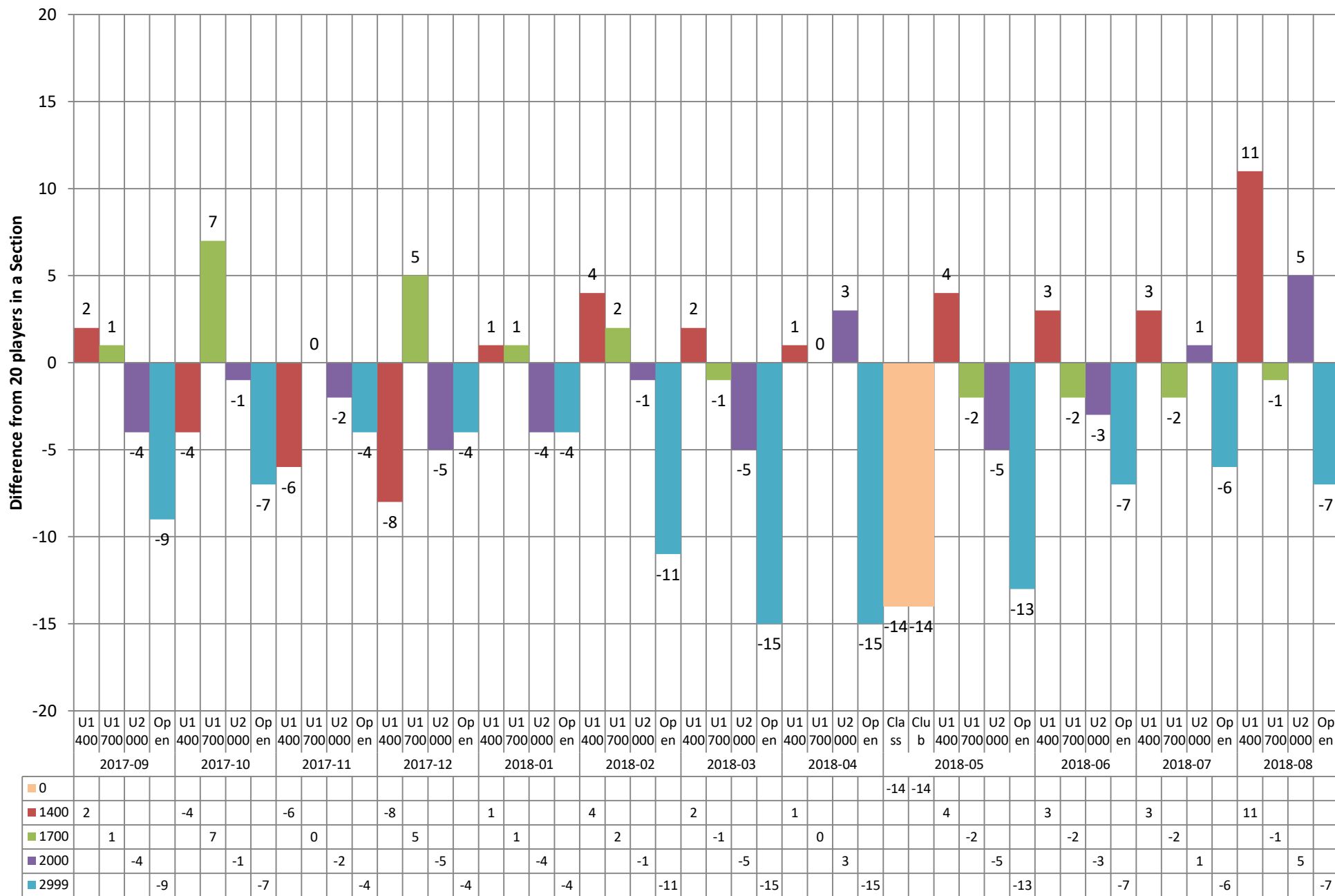


	2017-09				2017-10				2017-11				2017-12				2018-01				2018-02				2018-03				2018-04				2018-05				2018-06				2018-07				2018-08			
	U1400	U1700	U2000	Open	U1400	U1700	U2000	Open	U1400	U1700	U2000	Open	U1400	U1700	U2000	Open	U1400	U1700	U2000	Open	U1400	U1700	U2000	Open	U1400	U1700	U2000	Open	U1400	U1700	U2000	Open	U1400	U1700	U2000	Open	U1400	U1700	U2000	Open	U1400	U1700	U2000	Open				
■ 2999				11				13				16				16				16				9				5				5				7				13				14				13
■ 2000			16				19				18				15				16				19				15				23				15				17				21				25	
■ 1700		21					27				20				25				21				22				19				20				18				18				18				19	
■ 1400	22						16				14				12				21				24				22				21				24				23				31					
■ 0																																			6	6												

Month and Sections

Attendance per Month per Section

Difference from the ideal of 20 players per section



Month and Sections